



Argentine Carbon Neutrality Program

For Argentine food, beverages, and bioenergy for export

Corn and Sorghum Roundtable - Presentation of Manuals

November 2021 - Buenos Aires, Argentina

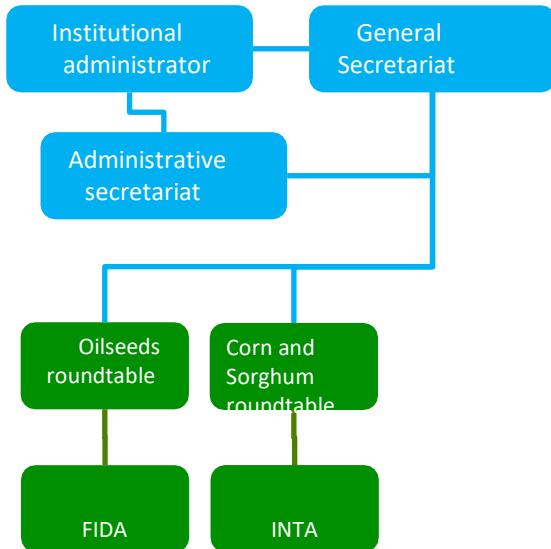


BOLSA
DE COMERCIO
DE ROSARIO



BCSF

PACN – A Private Program for Private Individuals



- PACN is a private program led by Argentina's **main grain and commodity exchanges**.
- The PACN is implemented through voluntary **sectoral committees** made up of producers, groups and/or sectoral associations/chambers (private stakeholders).
- Each sectoral roundtable has **representation from each of the productive links of the value chain with its different productive scales and has geographic representation at national level**.
- The members of the roundtable perform **collaborative work**, from a technical point of view through case studies and the availability of pre-existing studies and from a budgetary standpoint.
- Each roundtable selects a consulting group with sectoral and climate change experience to develop two sectoral tools, one for calculating the carbon balance per product based on local life cycle analysis and one for emissions management with the objective of achieving carbon neutrality.

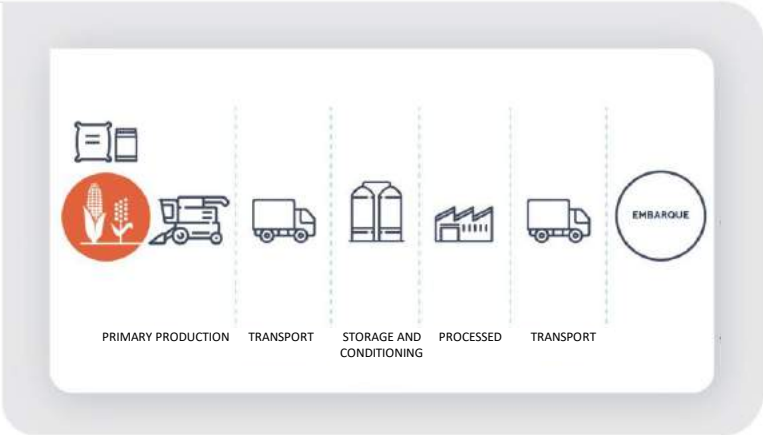


Manual de Metodología de
Cálculo de Balance de Carbono
para el Sector
MAIZ Y SORGO



#intatwitter #intafb #intafcebook #intafceplus #intafceplus #intafceplus #intafceplus #intafceplus #intafceplus #intafceplus

Publication of sectoral manuals
October 2021



- Stage 1 - Seed**
1. Sorghum seed (1 kg)
 2. Corn seed (1 kg)

- Stage 2 - Agricultural**
1. Corn grain for marketing (1 kg)
 2. Piscingallo corn grain (1 kg)
 3. Sorghum grain (1 kg)

- Stage 3 - Industrial**
1. Conventional corn meal (1 kg)
 2. Unrefined corn oil (1 kg)
 3. Corn starch (1 kg)
 4. Corn bioethanol (1 MJ)
 5. Corn dry soft corn (1 kg)



Functional unit	Standard	Type of information	File
Bioethanol Dry Burlanda	ISCC	Real field data	2021-08 Bioethatnol and burlanda calculator.xls
Corn meal	ISO 14067 + RCP	Real field data	2021-08 Corn meal calculator.xls
Cornstarch	ISO 14067	Real field data	2021.xls-08. Crude oil and cornstarch calculator.xls
Crude corn oil	ISO 14067	Real field data	2021-08 Crude oil and cornstarch calculator.xls
Commercial corn seed	ISO 14067	Real field data	2021-08 Corn seed calculator.xls
Commercial sorghum seed	ISO 14067	Real field data	2021-08 Sorghum seed calculator.xls
Corn grain	ISO 14067 + RCP	Field bibliographic data	2021-08 Corn grain calculator - data biblo.xls
		Real field data	2021-08 Corn grain calculator - data .xls
Sorghum grain	ISO 14067 + RCP	Real field data	2021-08 Sorghum grain calculator.xls



1) The use of bibliographic/statistical data to address the primary stage of production (origin of raw material) can be used as the first step in the production process). However, it is not taken as valid by the certification bodies in the case of choosing this process.

GUIDELINES FOR THE APPLICATION OF GOOD PRACTICES IN THE CORN AND SORGHUM CHAINS



Publication of sectoral manuals
October 2021

Primary production

- Soil resource
- Seeding
- Fertilization
- Plague management
- Harvesting
- Efficient use of energy in the field
- Water
- Biodiversity conservation
- Management of production residues

Stockpiles and delivery points

- Storage in silo bags
- Reception and dispatch
- Storage and conditioning

Industrial process

- Efficient and rational use of energy
- Waste and effluent management
- Efficient use of water
- Purchases of inputs and raw materials
- Offices and laboratories
- Innovation, R&D
- Measurement, monitoring, verification and reporting.

Logistics & transportation

- Logistics practices
- Transportation practices
- Internal and external control practices





Programa Argentino
de Carbono Neutro

carbononeutro@bc.org.ar

www.carbononeutro.com.ar